

SUNDAY MONDAY TUESDAY WEDNESDAY THURSDAY FRIDAY SATURDAY SPECIAL EVENTS

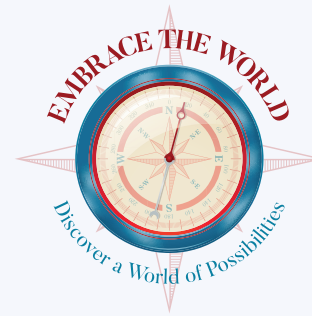
8 Dimensions of Wellness

Health and wellness means having a balanced life rich in vitality and well-being. To assist our residents in achieving a healthier and happier lifestyle, we provide programming that focuses on 8 Dimensions of Wellness:

Physical Environmental Vocational Intellectual
 Social Spiritual Emotional Health Services

For the month of February we will be focusing on **Social Wellness**. These activities are marked with an asterisk.

This month we are traveling to



Join us as we explore the many different cultural regions from around the world each month. If you have any photos or experiences that you would like to share with the residents during a month please contact the Director of Life Enrichment.

1

2

3

SPECIAL EVENTS

4

5

6

7

8

INT'L WOMEN'S DAY

9

10

11 DAYLIGHT SAVING BEGINS

12

13

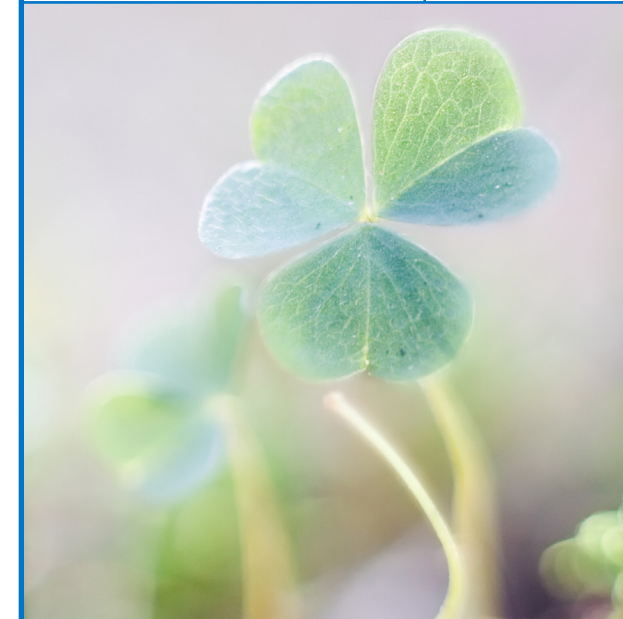
14

15

16

17 ST. PATRICK'S DAY

| SUNDAY | MONDAY | TUESDAY | WEDNESDAY | THURSDAY | FRIDAY | SATURDAY | SPECIAL EVENTS |
|--------|--------|------------------|-----------|----------|--------|----------|----------------|
| 18 | 19 | 20 MARCH EQUINOX | 21 | 22 | 23 | 24 | |
| 25 | 26 | 27 | 28 | 29 | 30 | 31 | |



Note: Scheduled activities and events are subject to change without prior notice. Please see Life Enrichment staff for any possible changes and/or updates.